

MONTHLY MEMBERSHIP PROGRESS REPORT

District 5M 7

Results as of: 6/30/2024

GMT:

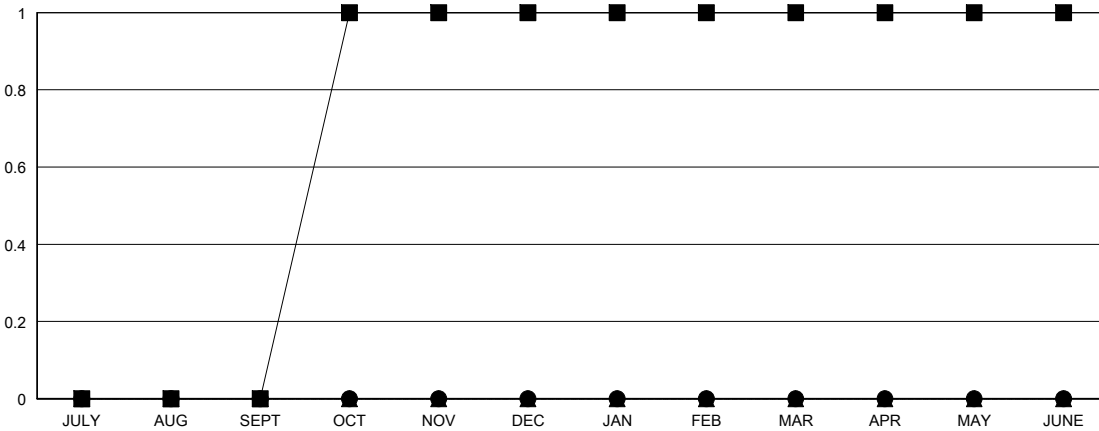
LOCATION MINNESOTA

GMT CA

| Clubs | | | |
|-----------------------|---------------|-----------|---------------|
| RESULTS FOR 2023-2024 | | | |
| QUARTER | NEW CLUB GOAL | NEW CLUBS | DROPPED CLUBS |
| JULY/AUG/SEPT | 0 | 0 | 1 |
| OCT/NOV/DEC | 1 | 0 | 0 |
| JAN/FEB/MAR | 0 | 0 | 0 |
| APR/MAY/JUNE | 0 | 0 | 0 |

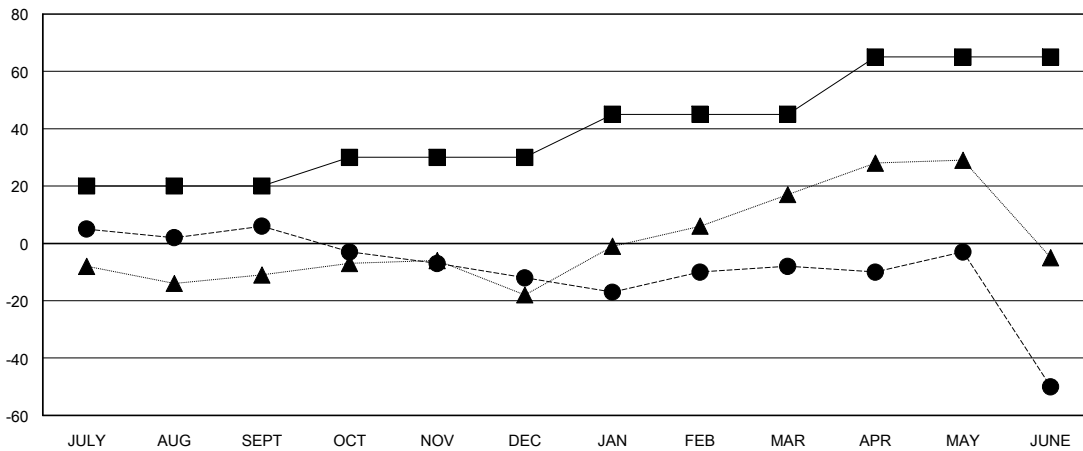
| Members | | | |
|-----------------------|------------------------|----------------------|--|
| RESULTS FOR 2023-2024 | | | |
| QUARTER | MEMBER GROWTH NET GOAL | MEMBER GROWTH ACTUAL | DROPPED MEMBERS ACTUAL (including transfers) |
| JULY/AUG/SEPT | 20 | 56 | 45 |
| OCT/NOV/DEC | 10 | 44 | 60 |
| JAN/FEB/MAR | 15 | 39 | 31 |
| APR/MAY/JUNE | 20 | 32 | 70 |

GOALS AND ACTUAL NEW CLUBS CUMULATIVE



- - CURRENT YEAR GOALS FOR NEW CLUBS
- - CURRENT YEAR ACTUAL NEW CLUBS
- ▲ - LAST YEAR ACTUAL NEW CLUBS

GOALS AND ACTUAL MEMBERS CUMULATIVE



- - MEMBER GROWTH NET GOAL
- - MEMBER GROWTH ACTUAL
- ▲ - LAST YEAR MEMBERSHIP ACTUAL

| | | |
|--|---|--|
| DROPPED CLUBS: 1 | 38 CLUBS OF 52 ADDED 1 OR MORE NEW MEMBERS | GENDER DISTRIBUTION MALE 1,155 (69.04%) FEMALE 512 (30.60%) |
| DROPPED MEMBERS DECEASED 24 CLUB CANCELLED 0 OTHER 182 TOTAL 206 | CLICK HERE FOR CUMULATIVE MEMBERSHIP DATA | TOTAL FAMILY UNIT MEMBERS 339 FAMILY MEMBERS PAYING HALF DUES 176 |